

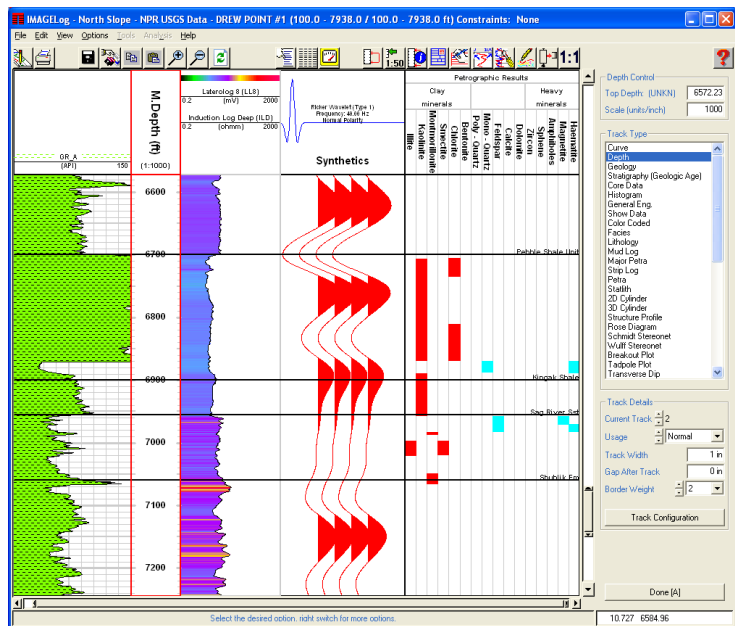
TerraStation II Training Course

TERRASCIENCES provides one of the most advanced, yet easy to use packages for the display and analysis of borehole data available today. You have the capability to perform anything from a simple quick-look analysis of a single well, to a detailed field study of several thousand wells. As with all systems you can get more out of it if you have been through a training class.

Goals

After completing the course, a student should be capable of using the software to do the following:

- Understand the TerraStation II data structures and user interface.
- Create projects and load map and log data from a variety of formats.
- Display data graphically and in tabular form.
- Edit, shift and splice log data.
- Export data in a variety of formats.
- Perform create and use simple computations.
- Have an understanding of the deterministic petrophysical capabilities.
- Build a cross section.
- Generate maps of structures and other data.
- Create graphical outputs in a variety of formats.



Who should attend a course?

Any user wanting to utilize the TerraStation II software. The course is primarily aimed at first time users, but will also be of use to experienced users who may not have utilized all parts of the software to which they are licensed, or who simply want a refresher course.

How long is the course?

We are flexible on this depending on the particular modules a client has licensed, but three days is usually enough. The course is given in English. If it is necessary to go through an interpreter then the length of time for the course is usually longer.

What else should I know?

Usually the course is restricted to six students or less. We can accommodate more for an additional fee.

Normally the client supplies the computer hardware and a location for the course. TERRASCIENCES will provide additional training licenses as needed at no additional charge for the duration of the course and up to one month after the course for students to continue with self-tuition.



Course Breakdown

The following is a breakdown of the standard course.

Introduction

- Installation information
- Licensing of modules
- Parameter files
- TerraStation data model
- Project creation
- Loading map data
- Loading well data
- Loading core data & photographs
- QuickView LAS viewing function
- Project file management
- Curve aliasing/alias rules
- Help file access

Display of Data

- Well composite displays
- Core Image display
- Histograms – single and multi well
- Crossplots – single and multi well
- Tabular displays of well data
- Curve Statistics
- Cross sections
- Contour Maps
- Base Maps

Editing Data

- Interpolating curves
- Filtering curves
- Normalizing curves
- Splicing curves
- Base line shifting
- Depth shifting
- Creating lithology/facies log
- Adding text comments
- Adding graphic images (BMP, JPEG, etc)

Cross Sections

- Create a section line
- Define section display options
- Display composite log templates
- Structural and stratigraphic section
- Fill between tops
- Edit tops on section

Map Displays

- Compute map data from logs
- Generate a contour map
- Generate a base map
- Post well log displays on base map

Petrophysical Options

- Define parameter zones
- Load directional survey data
- Perform Quicklook deterministic analysis
- Compute Vshale, Porosity & Sw models
- Compute detailed netpay report
- Compute simple algebraic mineralogy model
- Compute probabilistic lithology/fluid model
- Simple user defined equations

Other Capabilities

- Create composite log header
- Plot files and plot editing
- Create graphic output files (PDF, CGM, etc)

We can adjust the course contents to meet specific needs, perhaps less petrophysics, more geology, if requested.

Contact your nearest TERRASCIENCES sales representative for more information and pricing.



TERRASCIENCES

sales@terrasciences.com

www.terrasciences.com