

Composite Log Displays - IMAGELog

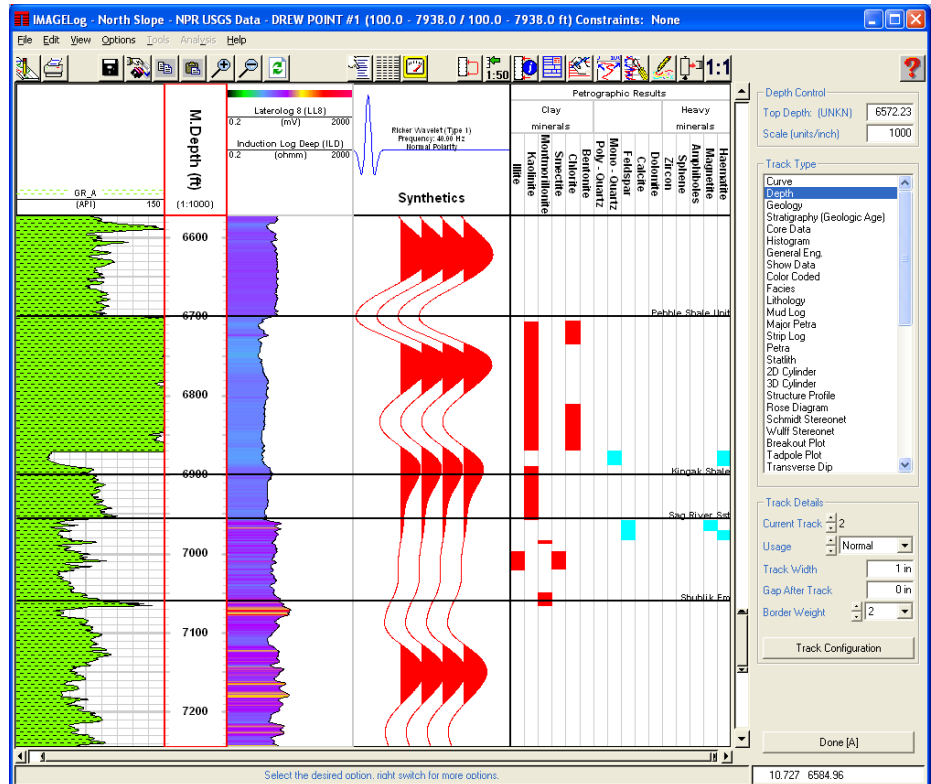
TERRASCIENCES provides one of the most advanced, yet easy to use, packages for the display and analysis of well data available today. IMAGELog is the ultimate in interactive composite log building. From simple curve tracks to complex multi track cross section templates, IMAGELog lets you do it all.

Complete Datum Control

Choose any datum to display your well data. This includes TVD, TVT, TST, travel time, or even a de-sanded depth curve. You can even display several datums on the same presentation.

Flexible Template Design

There are over 30 different track types to select from as you build your display. The tracks can be combined in any sequence to suit your particular need. All aspects of the templates are under user control. This includes individual track widths, grid line color and frequency, and much more. Any template can be saved, and restored for use with any well in any TerraStation project. Templates can be used for single well displays, in cross sections and fence diagrams within the Correlation module, or posted on base maps in any of the mapping applications.



Interactive Curve, Zone and Horizon Editing

IMAGELog provides you with the ability to depth shift and edit your curves interactively. You can also base line shift curves interactively. You can edit the location of any of the tops in your map file within IMAGELog. All of this is done with a simple "point and click" process. You can easily define zones of interest by simply clicking on the top and bottom of a desired interval.

Data Types Supported

As well as regular curve data, TerraStation and IMAGELog support a wide variety of other well data. This includes borehole imaging data, sonic waveform, NMR/CMR information, picks, core photographs, core analysis result data, descriptive text, lithological and facies indicators, petrographic, trace fossil and other paleontological data, well completion information (perforated zones, DST, RFT points, casing shoes, etc), mud log information and more.

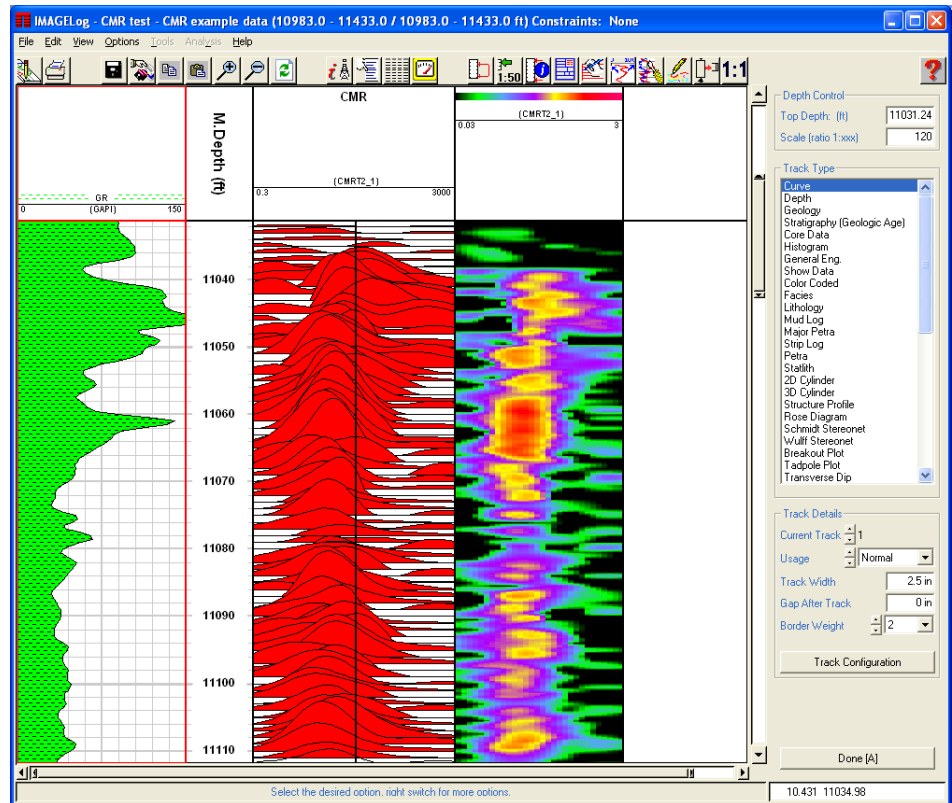
Support and Training

TERRASCIENCES provides immediate telephone and email support by trained earth science professionals. A regularly updated web site, electronic newsletter, and training courses are also available. All product upgrades are included in the maintenance and support fee.

Product Specifications



- ✓ Data loading from all common formats including LIS, DLIS, LAS, and other ASCII files.
- ✓ Optional OpenSpirit™ connectivity.
- ✓ Unlimited depth intervals, up to 10,000 wells per project.
- ✓ Any datum can be used for displaying the data.
- ✓ User created well header and footer capability.
- ✓ Templates can be used on any well in any TerraStation project.
- ✓ Templates can be used in cross sections and base map displays.
- ✓ Synthetic seismogram display.
- ✓ NMR/CMR data display options.
- ✓ Interactive creation and editing of lithology tracks.
- ✓ Allows raster and other graphic images to be incorporated as part of the display.
- ✓ Allows combining of almost all types of well data into a composite display.
- ✓ Interactive display and editing of map structures on the composite displays.
- ✓ Over 30 different track types available.
- ✓ Full set of SCAT tracks for dip meter data display.
- ✓ Hole shape analysis tracks.
- ✓ Borehole imaging and sonic waveform displays.
- ✓ Interactive curve editing, shifting, base line shifting, splicing.
- ✓ Full suite of directional survey computations to generate TVD, TVT, and TST.
- ✓ Load and display engineering and completion data – RFT, sidewall cores, perforations, and much more.
- ✓ Limestone and sandstone classification tracks, trace fossil track, and many more classification tracks.
- ✓ Graphics output to CGM, Postscript, PDF, EMF, BMP, JPEG, HPGL/2, and more.



TERRASCIENCES, Inc.
7800 S. Elati St.,
Suite 300
Littleton, CO 80120
USA

Tel: (303) 794 5511
Fax: (303) 794 7755
Email: sales@terrasciences.com

TERRASCIENCES Ltd.,
Palace Chambers,
41 London Road
Stroud
Glos. GL5 2AJ
UK

Tel: (01453) 767683
Email: sales@terrasciences.co.uk

Web: www.terrasciences.com