

## Borehole Imaging

Imaging logs are a valuable tool in both structural and sedimentological interpretations of well data. They can be used to match core to log depth, help in facies characterization, and provide accurate dip information for paleocurrent analysis. They are also very useful in the interpretation of fractures in reservoirs, especially in determining whether fractures are natural or drilling induced. Borehole breakout analysis is another use of this type of data. Due to the high resolution of imaging tools, they can often provide insight into the thickness and distribution of thin beds in a sequence.

### Input Data

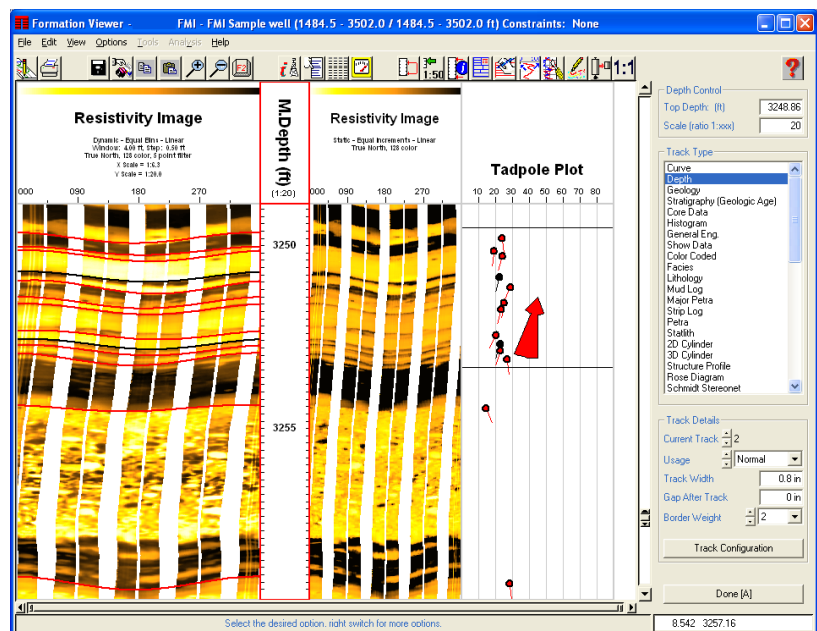
Borehole image data from a variety of tools is supported. This includes FMI, EMI, HMI, OBMI, STAR, CAST, UBI, FMS, XRMI, CMI, Earth Imager, and FAC-40. Other tools can be added as they become available. Input data formats supported are LIS and DLIS.

### Data Processing

A number of processing functions are available for enhancing the quality of the data. These include speed corrections, pad and pad/flap correlations, swing-arm, EMEX and gain correction and 'dead' button removal. Individual button shifts can also be applied.

### Data Visualization

Dynamic and static normalization of the data can be performed. The user has full interactive, control over the color mapping of the data, with several predefined color maps being provided. Color maps can be created, saved, and restored. The dynamic normalization parameters can also be controlled interactively to allow you to see more than the standard logging company output. Edge enhancement and other filtering functions are provided.



The data can be displayed in the false color image mode or as individual wiggle traces. In addition a 'core-like' display of the imaging data can be displayed. This can be viewed from any angle or direction.

### Data Interpretation

Any number of user definable pick categories and sub categories can be defined. Features identified on the image can be defined using an interactive "point & shoot" method. Picks can be displayed in relative or absolute orientation. You can set the depth of investigation of the tool to ensure the dips and azimuths are accurately computed. Picks can be made on any borehole imaging data as well as dipmeter logs and circumferential core photographs.

A full suite of SCAT and other dip and azimuth data displays are available to aid in your analysis of the picked data. This includes an interactive stereonet based dip analysis option.

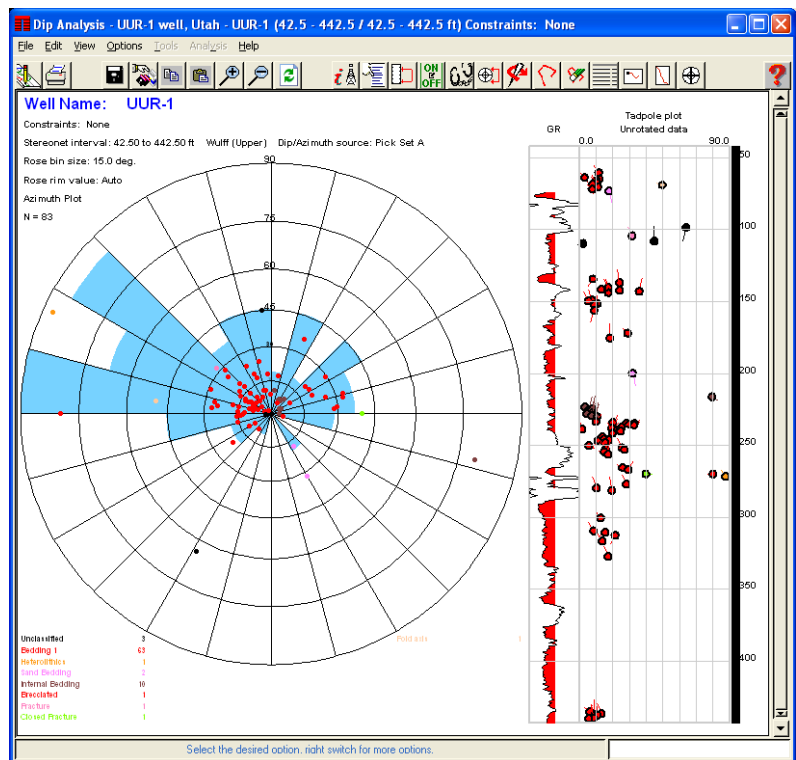
### Support and Training

TERRASCIENCES provides immediate telephone and email support by trained earth science professionals. A regularly updated web site, electronic newsletter, and training courses are also available. All product upgrades are included in the maintenance and support fee.

# Product Specifications



- ☑ Data loading from LIS and DLIS files.
- ☑ Supports all imaging tools including EMI, FMI, OBMI, FMS, EarthImager, UBI, CBIL, STAR, RAB, ARI, ADN and more.
- ☑ Supports images written as RGB values, as well as the usual sonic and resistivity/conductivity values.
- ☑ Supports a user definable depth of investigation setting to ensure accurate computation of dips.
- ☑ Processing options include: borehole geometry corrections, accelerometer corrections, pad to flap correlation, pad normalization, swing arm corrections, dead button removal, EMEX and gain corrections, button equalization.
- ☑ Image editing and splicing capabilities
- ☑ Static display and dynamic display options with user-defined window and step sizes.
- ☑ Image filtering options to enhance features within the image.
- ☑ Display alongside any other borehole information (wireline logs, core photos, lithologic interpretation, completion information, and more).
- ☑ Full vertical and horizontal scale control.
- ☑ Interactive, user-definable color maps.
- ☑ Automatic and manual dip generation.
- ☑ User definable categories for dips.
- ☑ Full SCAT plotting options for dip information.
- ☑ Fully interactive dip interpretation package including stereonet analysis.
- ☑ Fracture aperture analysis, fracture length, and sand count analysis.
- ☑ Breakout picking and interpretation.
- ☑ Sand count analysis.
- ☑ Fracture height and aperture analysis.
- ☑ Composite log design and display.
- ☑ Imaging logs can be displayed in cross section by utilizing other modules within the TerraStation.
- ☑ Graphics output to CGM, Postscript, PDF, EMF, BMP, JPEG, HPGL/2, and more.



TERRASCIENCES, Inc.  
7800 S. Elati St.,  
Suite 300  
Littleton, CO 80120  
USA  
  
Tel: (303) 794 5511  
Fax: (303) 794 7755  
Email: sales@terrasciences.com

TERRASCIENCES Ltd.,  
Palace Chambers,  
41 London Road  
Stroud  
Glos. GL5 2AJ  
UK  
  
Tel: (01453) 767683  
Email: sales@terrasciences.co.uk